

# GALVANISED CHASSIS BIN

67M<sup>3</sup>

Approximately 50 Ton Wheat

94M<sup>3</sup>

Approximately 71 Ton Wheat

121 M<sup>3</sup>

Approximately 91 Ton Wheat

135 M<sup>3</sup>

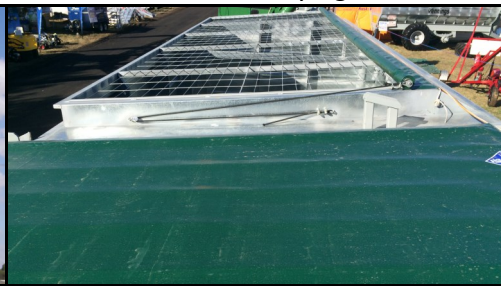
Approximately 101 Ton Wheat



*135 M<sup>3</sup> Bin 6 Axles with Upright Lids above*



Upright Lidded Bin



Roll Tarp Lidded Bin



Flat Lidded Bin

## CHASSIS

Manufactured from 360mm universal beam.

## BIN BODY

Manufactured from 1.6 mm galvanised butt welded sheets.

## AXLES

New 10 stud axles. Extra front or rear axles available.

## TYRES

Fitted on 11R 22.5 dual used tyres. Bombers available.

## PTO / HYD DRIVE

PTO drive with slip clutch located in centre of bin allowing full turning  
Hydraulic drive also available (dependant on your tractors oil supply)

## TURNTABLE

Heavy duty turntable for ease of turning.

## LIDS

Large waterproof fold back lids operated from the ground. Roll tarp option also available

## DISCHARGE AUGER

67 & 94 M<sup>3</sup> bin fitted with 315mm (12.5") auger. Discharges approximately 4 ton per minute. 121 & 135 M<sup>3</sup> bin fitted with 381mm (15") auger. Discharges approximately 6 ton per min.

## HYD. FOLDING AUGER

Hydraulic folding auger standard on all bins.

## CLEAN OUT

Removable floor bar for easy clean out (pictured over page).

Discharge bagging doors in case of auger breakdown.



## SIGNS & LIGHTS

Fitted with over size sign, revolving light and LED stop tail & turning lights (pictured over page)

## MONITOR & CAMERA'S

Optional 7" Single View or 9" Quad view Monitors and Cameras for ease of use and added safety.



			
4 x B Section belt drive for sweep auger on 94M <sup>3</sup> , 121M <sup>3</sup> , 121M <sup>3</sup> & 135M <sup>3</sup> . 2 x B Section belt drive on 67M <sup>3</sup>	Front drive with cover and PTO shaft fitted	Over size sign, revolving light and LED stop tail & turning lights fitted to the rear of all bins	Optional viewing windows available on all bins
			
Upright lidded bin fitted with splash guards	Rear cleanout floor bar	Front cleanout floor bar	View inside 121M <sup>3</sup> Bin
			
Upright lidded bin fitted with spring assisted lids	Drop down legs in lowered position for extra support, reduces load on axles and wheels when the bin is fully loaded	A manhole is fitted to all Chassis Bins making it easy to inspect inside the bin when it is empty without climbing onto the bin. View from inside the bin	121 M <sup>3</sup> bin with 381mm (15") discharge auger (standard) loading B Double Semi
	Hydraulic folding auger for ease of use and safer operation. Standard on all bins	 Optional 9" Quad view Monitors and Cameras for ease of use and added safety. 7" Single view also available	 Spring loaded top auger



**MANUFACTURED AND  
DISTRIBUTED BY**

**40 MOONTA ROAD  
KADINA SOUTH AUSTRALIA 5554**

**Phone 08 8821 1196  
Fax 08 8821 2774**

**Web [www.vennings.com.au](http://www.vennings.com.au)  
Email [info@vennings.com.au](mailto:info@vennings.com.au)**

Visit webpage



The manufacturer reserves the right to change specifications without notice or incurring obligation. Information contained herein is from data available at time of printing. Photo for illustration purposes only. All quoted capacities are nominal.

## Size Specifications

Cubic Capacity of Bin (M <sup>3</sup> )	Approximate Capacity in Tonnes				
	Wheat, Lupins & Peas .75 tonnes / m <sup>3</sup>	Barley .62 tonnes / m <sup>3</sup>	Canola .67 tonnes / m <sup>3</sup>	Chickpea .60 tonnes / m <sup>3</sup>	Oats .50 tonnes / m <sup>3</sup>
67	50	42	45	40	34
94	71	58	63	56	47
121	91	75	81	73	61
135	101	84	90	81	68

Please note capacity / cubic metre varies significantly according to moisture content and variety. We have sourced our grain densities from Kondinin Group, The Workshop Companion to calculate bin capacities. <http://www.kondininbookstore.com.au/the-workshop-companion/> Page 71 Chart 123

Width	3.45M (11' 3")
Height Auger Down Including Spout	4.72M (15' 6")
Loading Height	3.32M (10' 11")
Discharge Height	4.50M (14' 9")
Length 67M <sup>3</sup> (Approx. 50 tonne Wheat) (Including front pull & rear ladder)	10.25M (33' 8")
Length 94M <sup>3</sup> (Approx. 71 tonne Wheat) (Including front pull & rear ladder)	13.00M (43' 6")
Length 121M <sup>3</sup> (Approx. 91 tonne Wheat) (Including front pull & rear ladder)	16.25M (53' 4")
Length 135M <sup>3</sup> (Approx. 101 tonne Wheat) (Including front pull & rear ladder)	17.75M (58' 3")

Bin Size	Standard Number of Axles	Standard Auger Size	Drop Stands	Number & Type of Lids
67 M <sup>3</sup>	2 X 10 Stud Axles = 8 Wheels	315mm 12.5"	1 Set	4 Upright
67 M <sup>3</sup>	2 X 10 Stud Axles = 8 Wheels	315mm 12.5"	1 Set	2 Flat
67 M <sup>3</sup>	2 X 10 Stud Axles = 8 Wheels	315mm 12.5"	1 Set	2 Tarps
94 M <sup>3</sup>	3 X 10 Stud Axles = 12 Wheels	315mm 12.5"	1 Set	4 Upright
94 M <sup>3</sup>	3 X 10 Stud Axles = 12 Wheels	315mm 12.5"	1 Set	4 Flat
94 M <sup>3</sup>	3 X 10 Stud Axles = 12 Wheels	315mm 12.5"	1 Set	2 Tarps
121 M <sup>3</sup>	3 X 10 Stud Axles = 12 Wheels	381mm 15"	3 Sets	4 Upright
121 M <sup>3</sup>	3 X 10 Stud Axles = 12 Wheels	381mm 15"	3 Sets	4 Flat
121 M <sup>3</sup>	3 X 10 Stud Axles = 12 Wheels	381mm 15"	3 Sets	2 Tarps
121 M <sup>3</sup>	5 X 10 Stud Axles = 20 Wheels	381mm 15"	1 Set	4 Upright
121 M <sup>3</sup>	5 X 10 Stud Axles = 20 Wheels	381mm 15"	1 Set	4 Flat
121 M <sup>3</sup>	5 X 10 Stud Axles = 20 Wheels	381mm 15"	1 Set	2 Tarps
135 M <sup>3</sup>	6 X 10 Stud Axles = 24 Wheels	381mm 15"	1 Set	4 Upright
135 M <sup>3</sup>	6 X 10 Stud Axles = 24 Wheels	381mm 15"	1 Set	4 Flat
135 M <sup>3</sup>	6 X 10 Stud Axles = 24 Wheels	381mm 15"	1 Set	2 Tarps

The manufacturer reserves the right to change specifications without notice or incurring obligation. Information contained herein is from data available at time of printing. Photo for illustration purposes only. All quoted capacities are nominal.

## GALVANISED CHASSIS BIN PRICING

315mm (12.5") chain driven discharge auger capable of discharging up to 4 Tonne (50 bags) per minute on 67 & 94 M<sup>3</sup> bins. 381mm (15") chain driven discharge auger capable of discharging up to 6 Tonne (70 bags) per minute on 121 & 135 M<sup>3</sup> bins. Clutch system on front of bin enables the discharge auger to be started without floor auger operating. Bin can be shifted when partially loaded. All Bins fitted with waterproof lids or roll tarp and new 10 stud full width axles. Bins can be purchased less wheels and tyres. Hydraulic drive available providing tractor has sufficient oil supply. **All Bins Come Standard With Hydraulic Folding Auger**

<b>UPRIGHT LIDED BIN</b>		
67 M <sup>3</sup> (Approximately 50 Tonne Wheat)	8 X Wheels	\$
94 M <sup>3</sup> (Approximately 71 Tonne Wheat)	12 X Wheels	\$
121 M <sup>3</sup> (Approximately 91 Tonne Wheat)	12 X Wheels	\$
<b>TWIN STEER</b>		
121 M <sup>3</sup> (Approximately 91 Tonne Wheat)	20 X Wheels	\$
135 M <sup>3</sup> (Approximately 101 Tonne Wheat)	24 X Wheels	\$
<b>FLAT LIDED BIN</b>		
67 M <sup>3</sup> (Approximately 50 Tonne Wheat)	8 X Wheels	\$
94 M <sup>3</sup> (Approximately 71 Tonne Wheat)	12 X Wheels	\$
121 M <sup>3</sup> (Approximately 91 Tonne Wheat)	12 X Wheels	\$
<b>TWIN STEER</b>		
121 M <sup>3</sup> (Approximately 91 Tonne Wheat)	20 X Wheels	\$
135 M <sup>3</sup> (Approximately 101 Tonne Wheat)	24 X Wheels	\$
<b>ROLL TARP BIN</b>		
94 M <sup>3</sup> (Approximately 71 Tonne Wheat)	12 X Wheels	\$
121 M <sup>3</sup> (Approximately 91 Tonne Wheat)	12 X Wheels	\$
<b>TWIN STEER</b>		
121 M <sup>3</sup> (Approximately 91 Tonne Wheat)	20 X Wheels	\$
135 M <sup>3</sup> (Approximately 101 Tonne Wheat)	24 X Wheels	\$

### OPTIONS TO SUIT GALVANISED CHASSIS BIN

Truck Wheels Second hand 11R22.5 Tyres fitted to New 22.5 x 8.25 10 Stud rims	\$
381mm (15") Discharge Auger to suit 67 & 97 M <sup>3</sup> Bin (Standard on 121 & 135M <sup>3</sup> )	\$
Single Drive Hydraulic Motor	\$
Twin Drive Hydraulic Motor	\$
Extra Rear Axle 10 Stud fitted during production including wheels	\$
Extra Rear Axle 10 Stud supply only customer fit including wheels	\$
Extra Front Axle 10 Stud Twin Steer fitted in production	\$

**ALL PRICES INDLUCE GST**

	<b>MANUFACTURED AND DISTRIBUTED BY</b>	<b>40 MOONTA ROAD KADINA SOUTH AUSTRALIA 5554</b>  <b>Phone 08 8821 1196 Fax 08 8821 2774</b>  <b>Web <a href="http://www.vennings.com.au">www.vennings.com.au</a> Email <a href="mailto:info@vennings.com.au">info@vennings.com.au</a></b>	Visit webpage 
--	--	---	--

The manufacturer reserves the right to change specifications & pricing without notice or incurring obligation. Information contained herein is from data available at time of printing. Photo for illustration purposes only. All quoted capacities are nominal.