

GALVANISED CHASER BINS

30 CUBIC METRES (Approximately 25 Ton)



CHASER BIN FEATURES AND OPTIONS

CHASSIS	Manufactured from Heavy Duragal Channel and RHS
BIN BODY	Manufactured from 1.5 mm Galvanised butt welded sheet steel
AXLES	Axles are New heavy duty 10 stud with a 30 ton weight rating
TYRES	Recommended on New Tractor Tyres 30.5 x 32 16 ply with New rims other sizes and options available
PTO / HYD DRIVE	PTO Drive with slip clutch, 540 RPM drive standard or optional 1000 RPM Drive, Heavy Duty Gear box with 1" drive sprockets. Hydraulic drive also available (If sufficient oil supply)
TRACTOR	Recommend a minimum of 120 H/P on firm ground, 140 H/P on soft ground
DISCHARGE AUGER	Fitted with hydraulic raise & lower and folding chute. Standard with 15" Auger with a discharge rate up to 5 ton per minute. Optional 18" auger with a discharge rate greater than 6 ton per minute
DISCHARGE HEIGHT	Minimum 4.5m
BIN HEIGHT	3.3m
FLOOR AUGER	10" Flight. Removable full length slide out floor and trap door for easy cleaning. Hydraulic ram controlled shut off doors cover auger flight allowing bin to be unloaded at any speed
FOLDING CHUTE	Hydraulic ram controlled folding chute on end of discharge auger (pictured next page below)
LED WORK LIGHT	1200 Lumen LED Work light mounted by the discharge spout (pictured next page)
SIGNS & LIGHTS	Fitted with over size sign, revolving light and LED stop tail & turning lights (pictured next page)
DROP SPOUT	Optional Drop Spout Tube or hose for filling sheep feeders, auger hoppers etc.
SCALES	Optional scales with .05% accuracy. Four weigh cells under the axle (pictured next page) & one at the tow hitch
QUAD VIEW CAMERA	Optional 9" Quad view monitor with 3 Camera's mounted on the Bin, one on the end of discharge chute, one inside the bin and one at the rear of the bin



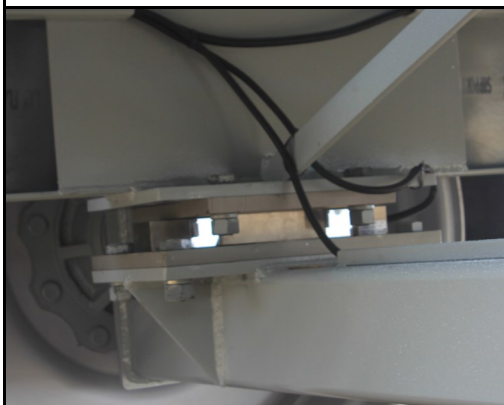
30 M³ Bin with auger folded fitted with standard hydraulic folding discharge chute



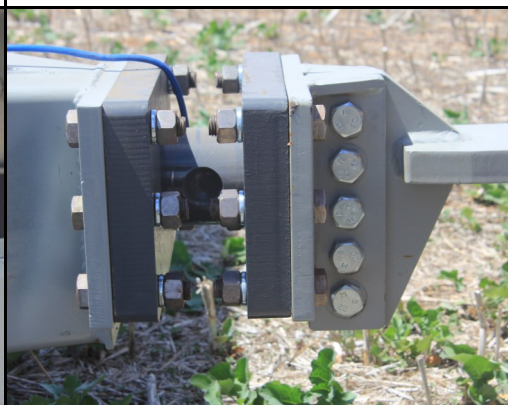
Bin fitted with LED Turning & Brake lights, Revolving Light and oversized sign



Heavy Duty Gearbox with 1" Drive Sprockets



Optional scales with .05% accuracy. Four weigh cells under the axles



Load cell mounted to adjustable height tow hitch



Hydraulic folding adjustable spout with 1200 lumen LED work light



Full length removable cleanout floor bar



Hydraulic controlled shut off doors cover sweep flight



2 x shut off door indicators on front of bin



Optional Drop Spout Hose for filling Sheep Feeders etc



2 Large viewing windows in the front of the bin

Other Chaser Bins in Our Range



15 M³ Approximately 12 Ton Bin Fixed Axle



22.5 M³ Approximately 18 Ton Bin Fixed Axle



30 M³ Approximately 25 Ton Bin Rocker & Steering Axle



33 M³ Approximately 28 Ton Bin With Springs, Steering & Brakes



MANUFACTURED AND
DISTRIBUTED BY

40 MOONTA ROAD
KADINA SOUTH AUSTRALIA 5554
Phone 08 8821 1196
Fax 08 8821 2774
Web www.vennings.com.au
Email info@vennings.com.au